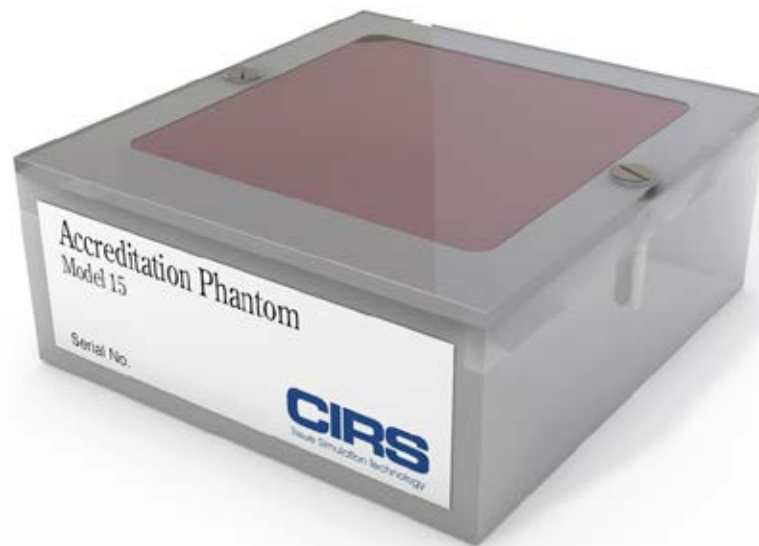


Mammographic Accreditation Phantom

Model 015



COMPLY WITH FDA PERFORMANCE STANDARD

The Mammography Quality Standards Act (MQSA) of 1992 requires that all mammography facilities in the United States be accredited by an approved body. The American College of Radiology is an MQSA approved accreditation body. To receive MQSA accreditation, each facility must submit an image of an ACR-approved phantom and, to maintain accreditation, the phantom must be imaged weekly and records of those images maintained. The ACR has approved the CIRS Model 015 for use in the ACR Mammography Accreditation Program.

The CIRS Model 015 Mammographic Accreditation Phantom was designed to test the performance of a mammographic system by a quantitative evaluation of the system's ability to image small structures similar to those found clinically. Objects within the phantom simulate calcifications, fibrous calcifications in ducts and tumor masses.

The phantom is designed to determine if your mammographic system can detect small structures that are important in the early detection of breast cancer. Test objects within the phantom range in size from those that should be visible on any system to objects that will be difficult to see even on the best mammographic systems.

Features

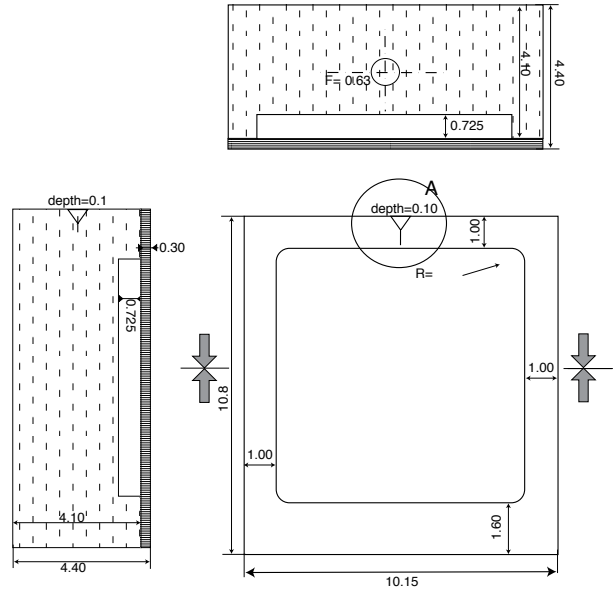
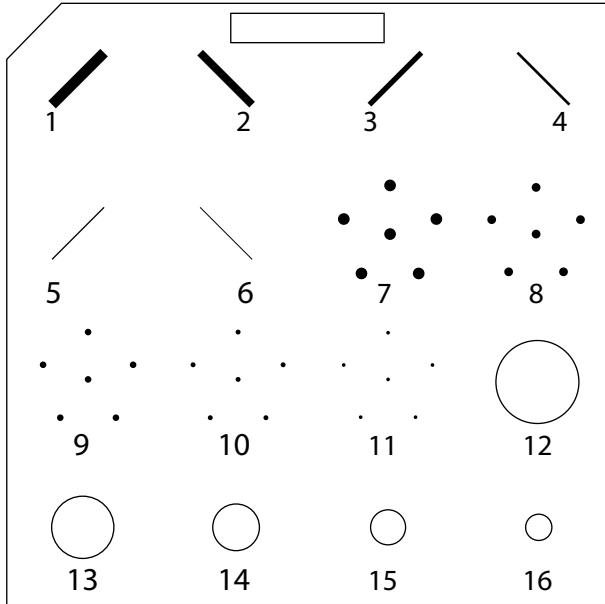
- Meets MQSA requirements
- Fibers, specks and masses embedded in wax insert to simulate microcalcifications, fibrous structures and tumors
- Simulates 4.2 cm compressed breast of average glandular/adipose composition

2428 Alameda Avenue Suite 316 • Norfolk, Virginia 23513 • USA
Tel: 800.617.1177 • 757.855.2765 • Fax: 757.857.0523

WWW.CIRSIINC.COM

CIRS

Tissue Simulation & Phantom Technology



SPECIFICATIONS

| WAX INSERT | | | | | |
|-------------------------|---------|--|---------|-----------------------|--------------|
| FIBERS (Nylon Fiber) | | SPECKS (Al ₂ O ₃ speck) | | MASSES (Thickness) | |
| 1. | 1.56 mm | 7. | 0.54 mm | 12. | 2.00 mm mass |
| 2. | 1.12 mm | 8. | 0.40 mm | 13. | 1.00 mm mass |
| 3. | 0.89 mm | 9. | 0.32 mm | 14. | 0.75 mm mass |
| 4. | 0.75 mm | 10. | 0.24 mm | 15. | 0.50 mm mass |
| 5. | 0.54 mm | 11. | 0.16 mm | 16. | 0.25 mm mass |
| 6. | 0.40 mm | - | - | - | - |

| | |
|------------------------|---|
| DIMENSIONS: | 10.8 cm x 10.2 cm x 4.4 cm (4.25" x 4.01" x 1.73") |
| PHANTOM WEIGHT: | 0.91 kg (2 lb) |
| MATERIALS: | Polymethylmethacrylate (PMMA) |

MODEL 015 INCLUDES

| QTY | COMPONENT DESCRIPTION |
|-----|------------------------------|
| 1 | 4 mm acrylic contrast target |
| 1 | Image of wax insert |
| 1 | User Guide |
| - | 48-Month Warranty |

